

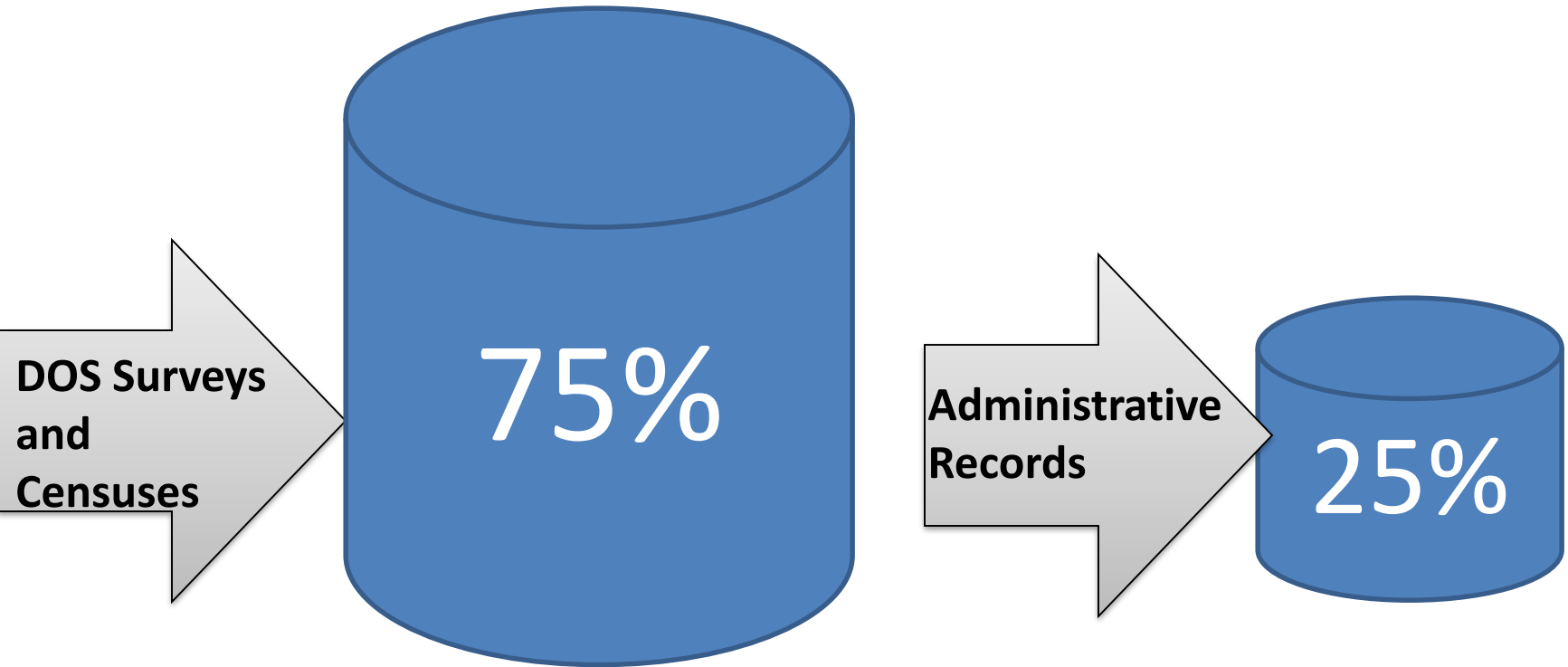
Jordan's experiences with admin data

Manal Sweidan

Head of Gender Statistics Division

Department of Statistics - Jordan

GS by Sources of Data



Sectors of GS by Source of Data

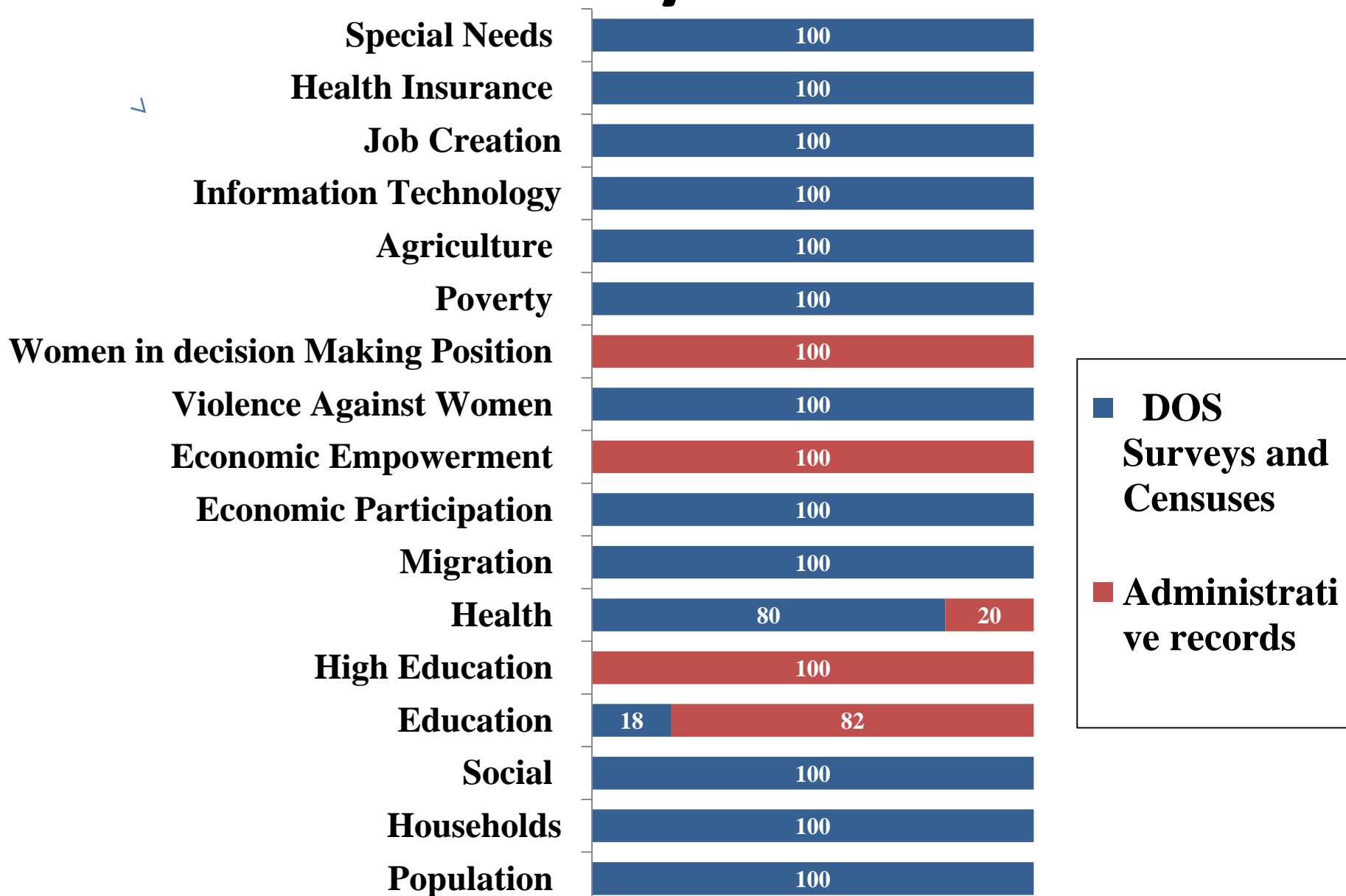
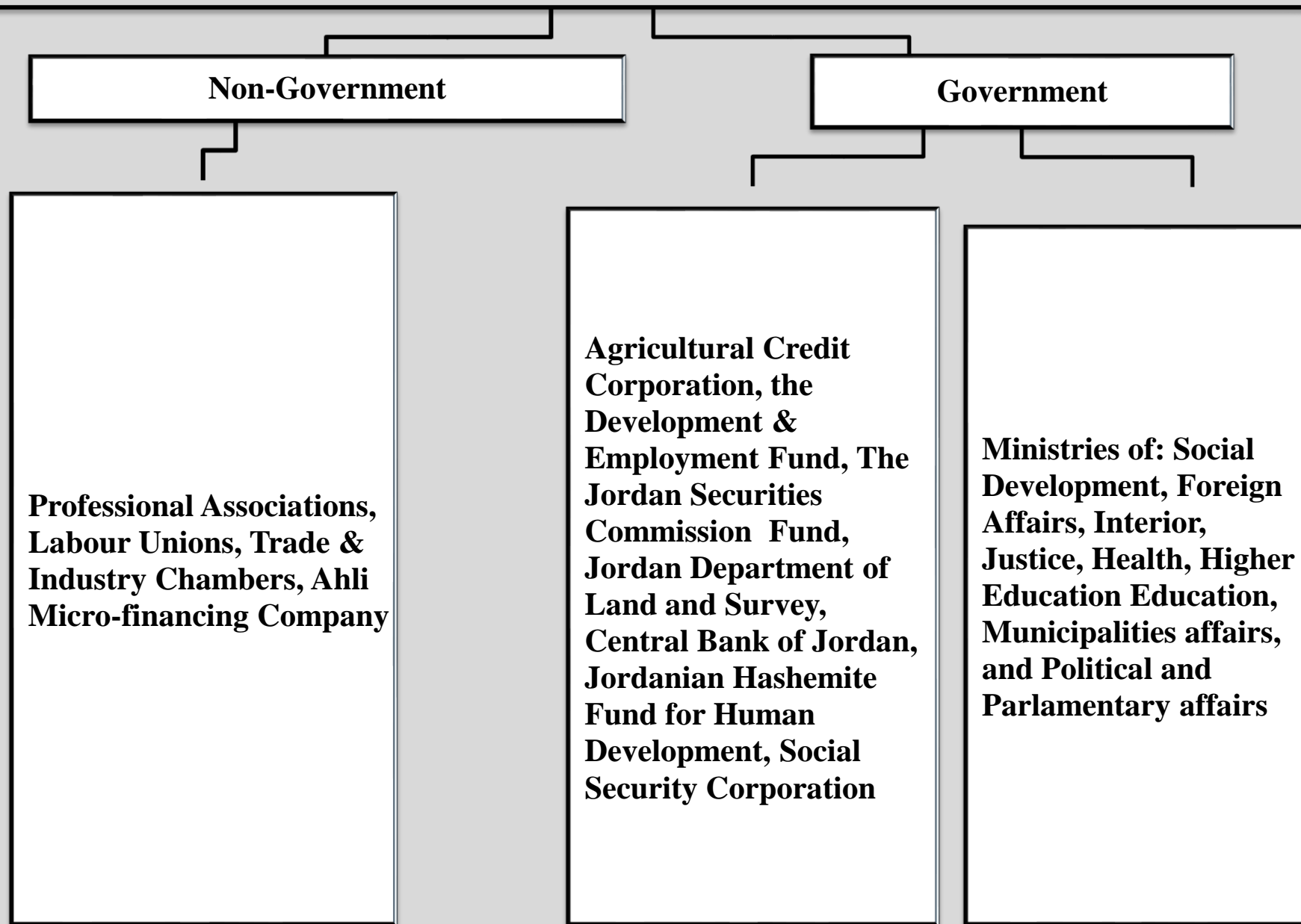


Figure : Sources of Administrative Records for Gender Statistics



Women in Decision Making Position

100% Administrative records

**Participation in The
Cabinet**

**Participation in The
Diplomatic Corps at
all levels**

Ambassadors

**Participation in The
Upper House of
Parliament (Senates)**

**Participation in The
Lower House of
Parliament (Deputies)**

**Participation in Local
Councils**

**Members of Labor
Unions**

**Members of
Professional Union
Boards**

**Members of
Professional Unions**

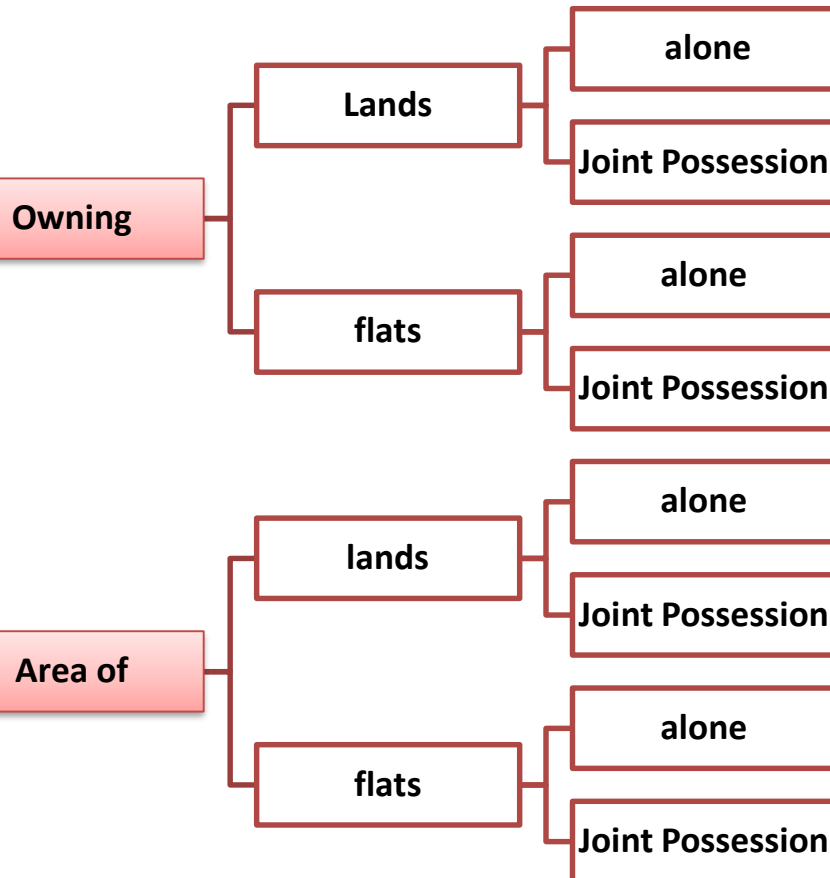
**Members of Political
Parties**

**Participation in the
executive bodies of
the Chambers of
Industry**

**Participation in the
executive bodies of
the Chambers of
Commerce**

Access to Economic Resources

100% Administrative records



Production of GS: An Example
Access to Economic Resources

Indicator	Female	Male	Joint ownership	Source
land owners (%)	17.0%	48.0%	35.0%	Department of Land and Survey, 2018
land area owned (%)	10.6%	67.2%	17.4%	
Apartment owners (%)	24.1%	58.6%	22.3%	
Area of owned apartments (%)	23.0%	69.5%	7.5%	

Higher Education

100% Administrative records

Students enrolled

Universities Education

Science Colleges

Art College

Students graduates

University education

Engineering-Communication-
Computer Science

Academic Staff at the
Jordanian Universities

Assistant Lecturer

Assistant Teacher

Instructor

Associate Professor

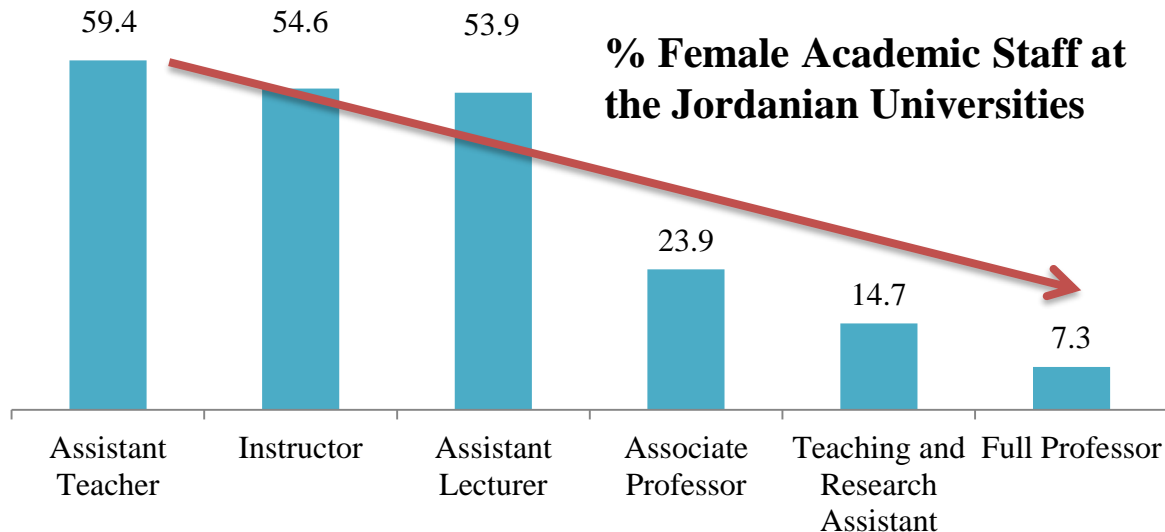
Teaching and Research Assistant

Full Professor

Academic staff at art colleges

Academic staff at science colleges

% Female Academic Staff at
the Jordanian Universities



Education

